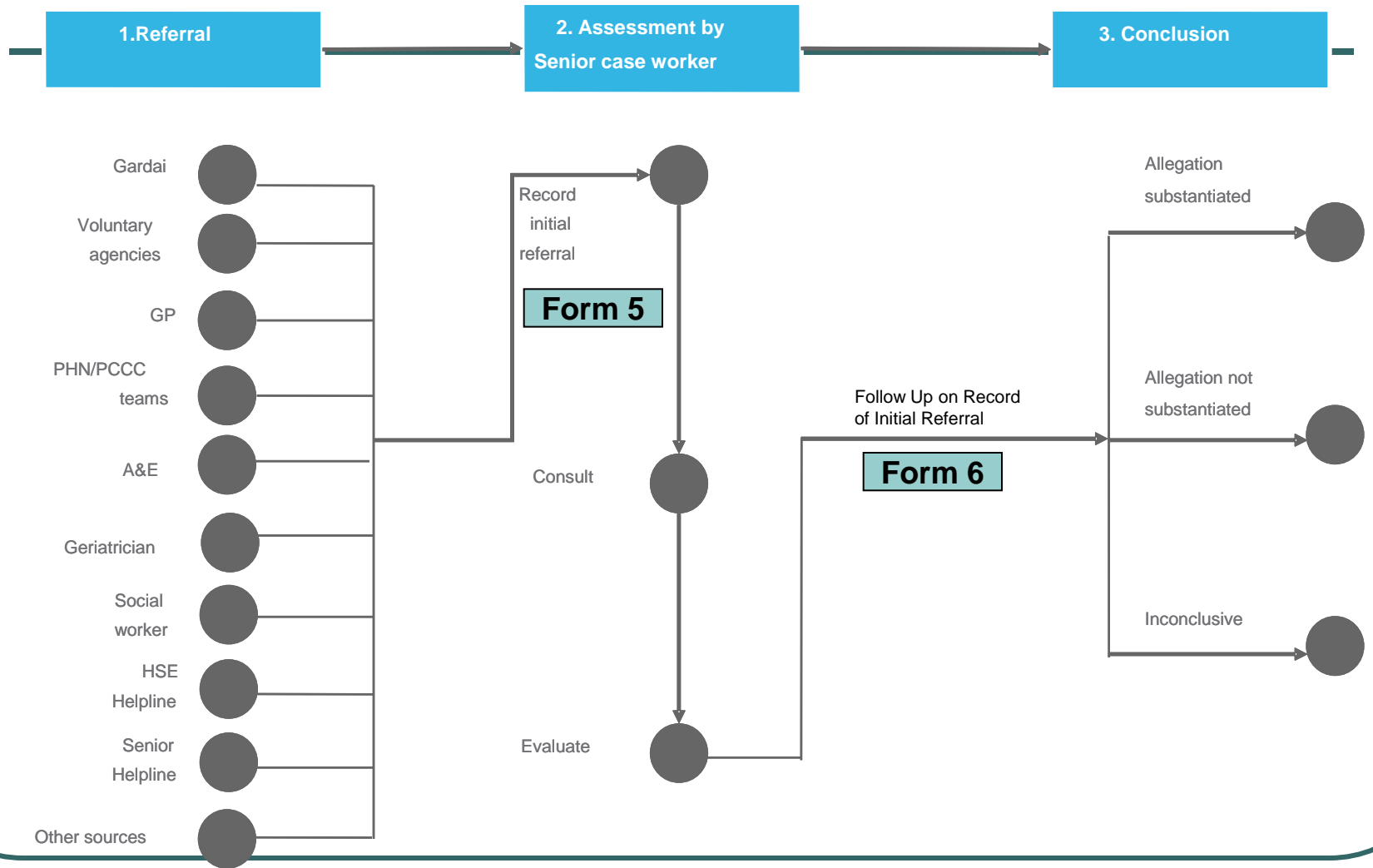


National Profiling of Elder Abuse Referrals 2010

World Elder Abuse Awareness Day 2011

Marguerite Clancy
Senior Research & Information Officer
HSE West

Referral Pathway

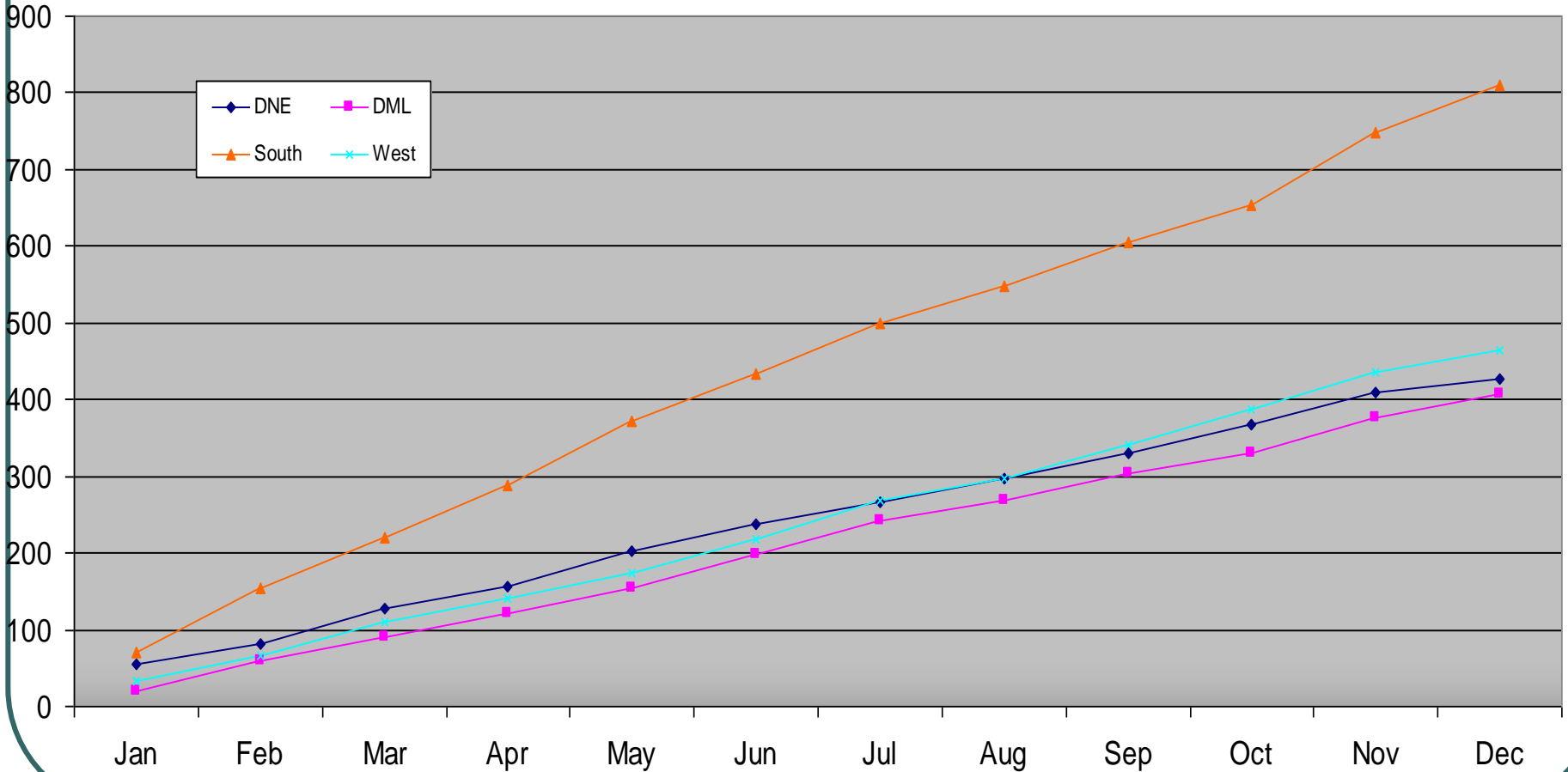


Number of Referrals

- 2007- 927 referrals
- 2008-1840 referrals
- 2009-1870 referrals
- 2010-2110 referrals

	Revised Yr End Position 2010	% Change from 2009	% Breakdown
DML	406	↑ 46%	19%
DNE	429	↓ 1%	20%
South	810	↑ 1%	38%
West	465	↑ 15%	22%
NATIONAL	2110	↑ 13 %	100%

Cumulative Referral Rate by HSE Area 2010



Referrals 2010: Age & Gender

- Gender: 63% Female; 37% Males
- Age: 5% <65 yrs, 51% 80+yrs

			Rate /1000 Population		
	Over 65yrs Population	Referrals	All 65 yrs+	65-79	80+
DML	122,369	387	3.32	2.07	6.67
DNE	92,266	400	4.63	2.61	10.11
South	128,545	680	6.25	3.59	10.72
West	124,746	436	3.73	2.25	7.10
National	467,926	1903	4.07	2.64	8.54

Abuse Categories 2008-2010

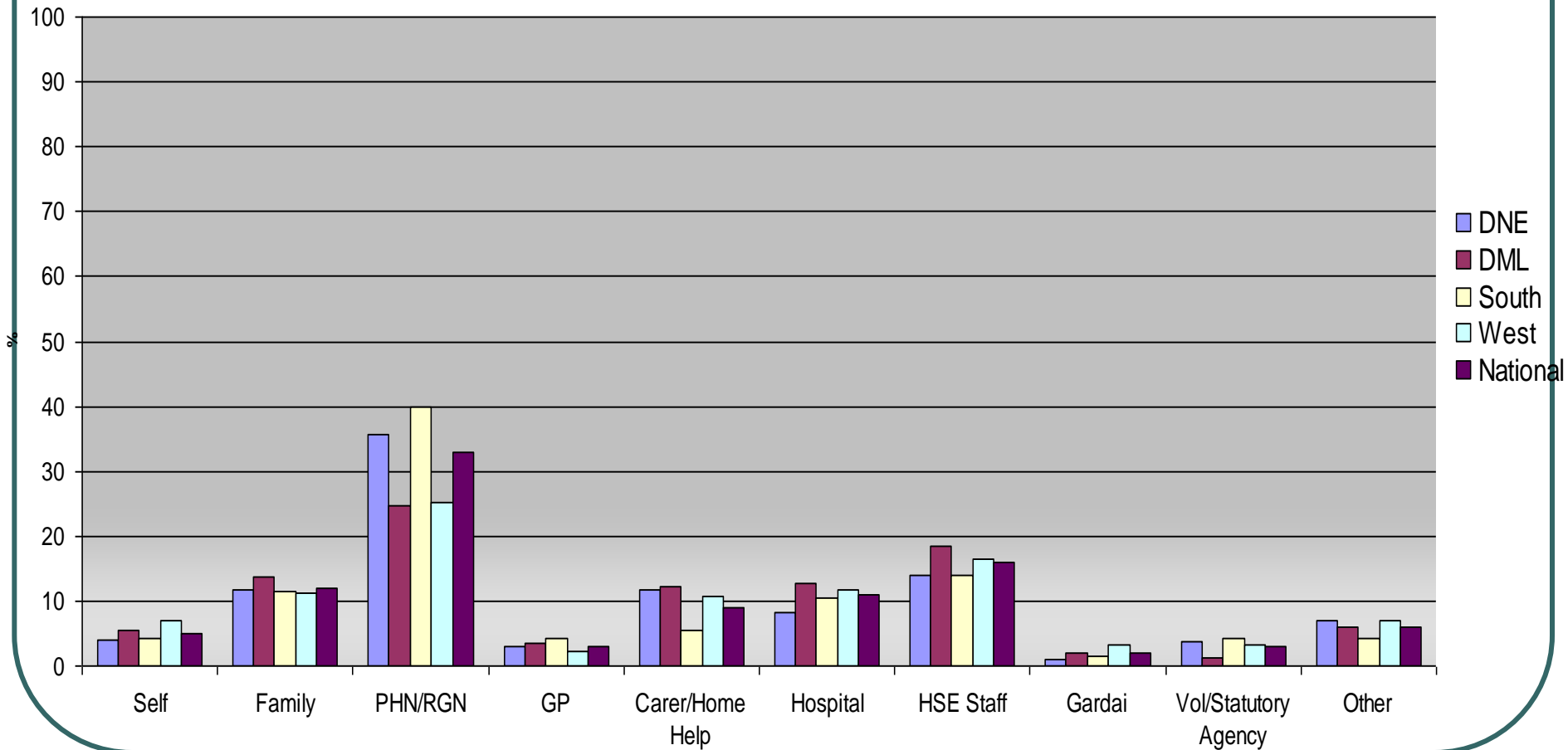
All Cases

		2008	%	2009	%	2010	%
Total Referrals		1840		1870		2110	
Rank Alleged Abuse Category	1	Psychological	26%	Psychological	28%	Psychological	26%
	2	Self-neglect	20%	Self-neglect	21%	Self-neglect	21%
	3	Neglect	19%	Financial	18%	Financial	19%
	4	Financial	16%	Neglect	17%	Neglect	19%
	5	Physical	12%	Physical	12%	Physical	14%

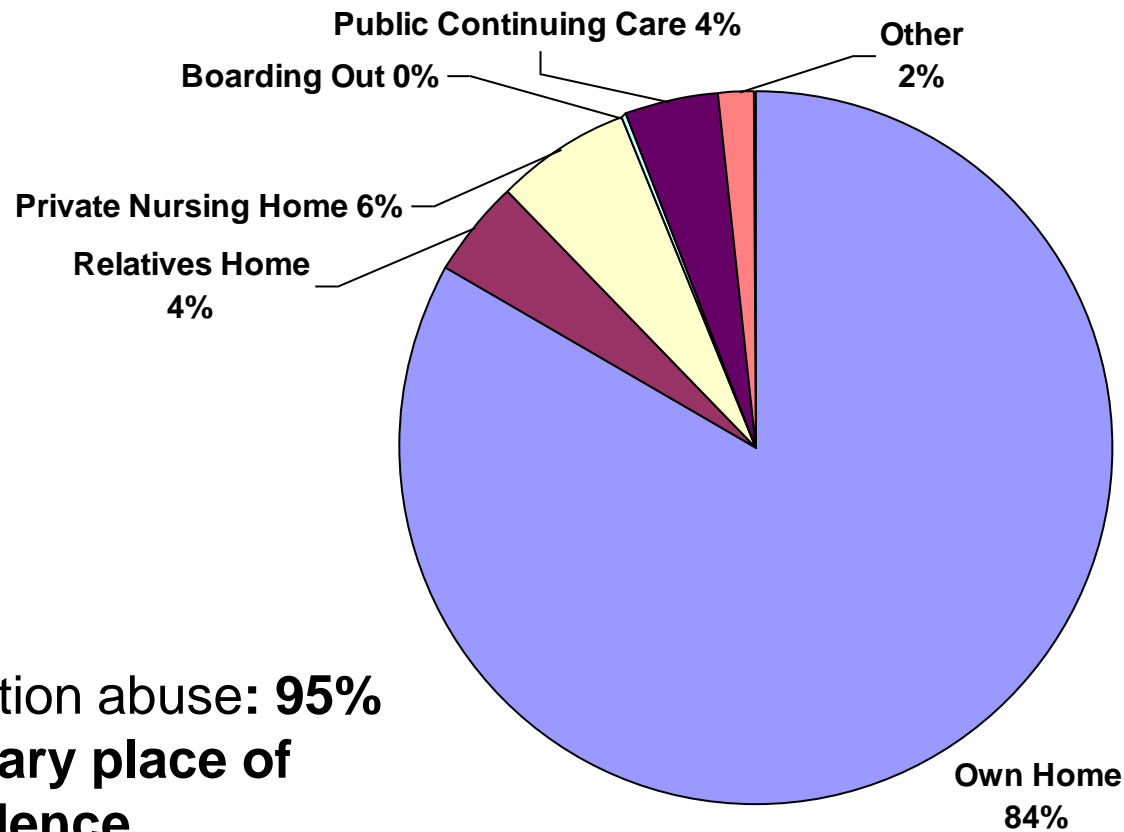
Cases with an Alleged Person Causing Concern

		2008	%	2009	%	2010	%
Total Referrals		N=1481		N=1435		N=1629	
Rank Alleged Abuse Category	1	Psychological	29%	Psychological	34%	Psychological	31%
	2	Neglect	22%	Financial	22%	Financial	23%
	3	Financial	19%	Neglect	20%	Neglect	22%
	4	Physical	15%	Physical	14%	Physical	13%

Referral Source 2010



Place of Residence



Location abuse: **95%**
primary place of
residence

Engagement with An Garda Síochána

- 13% consultation- DML 21%-South 8%
- 17% notification-West 24%-South 13%
- Summary by abuse category
 - 32% psychological
 - 24% financial
 - 19% physical
- 44% substantiated; 27% non abuse; 29% inconclusive
- Legal actions- domestic violence & ward of court

Case Outcome Comparison 2008-2010

	Revised 2008	Revised 2009	2010
Substantiated	23%	26%	29%
Confirmed Non Abuse	32%	32%	38%
Inconclusive	45%	42%	33%

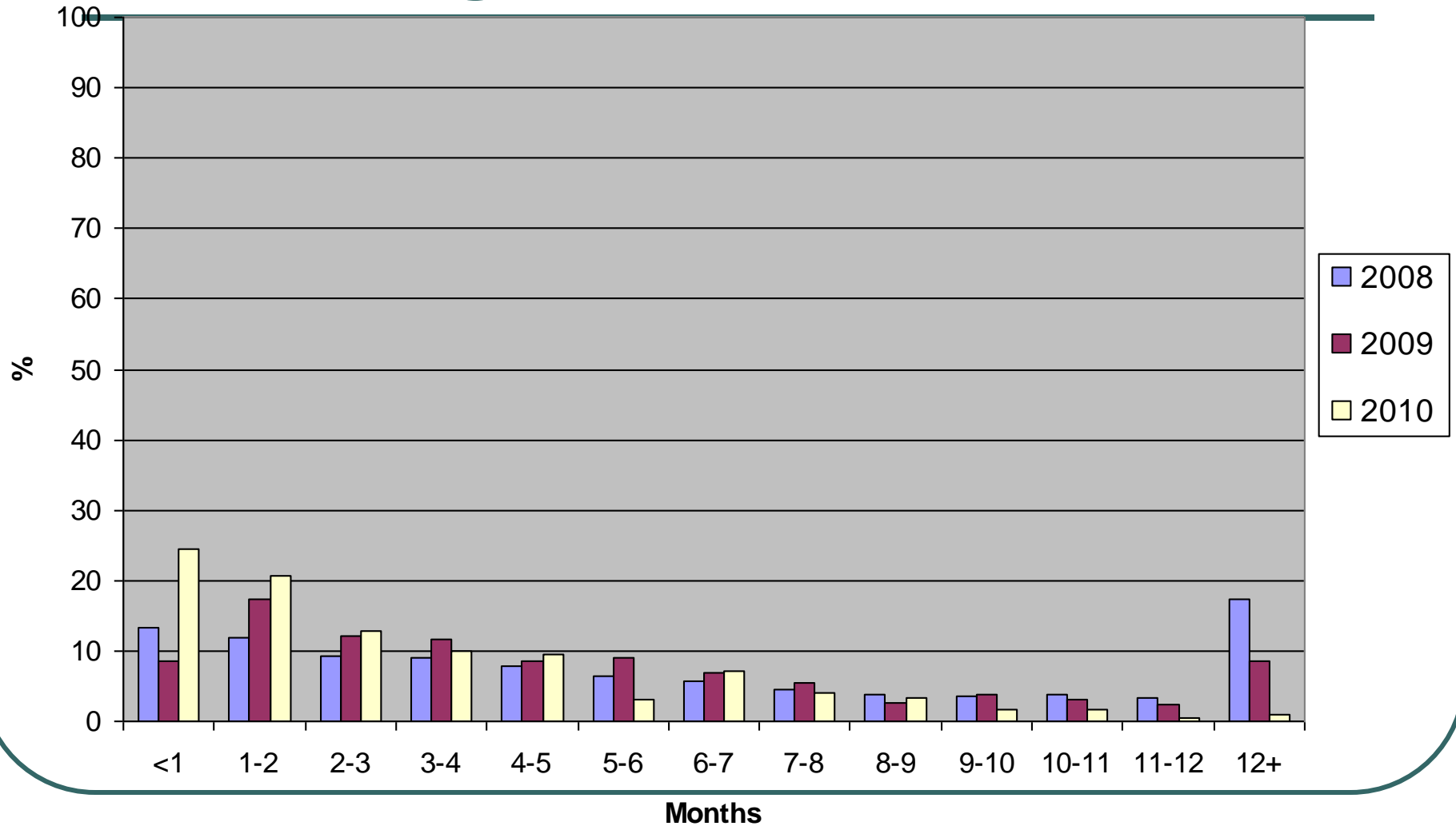
2010 National & Regional Position

	DNE		DML		South		West		National	
	No of Referrals	%	No of Referrals	%	No of Referrals	%	No of Referrals	%	No of Referrals	%
Substantiated	62	27%	114	43%	62	18%	64	33%	302	29%
Confirmed Non Abuse	110	48%	62	24%	154	45%	60	31%	386	38%
Inconclusive	59	25%	87	33%	124	37%	72	36%	342	33%

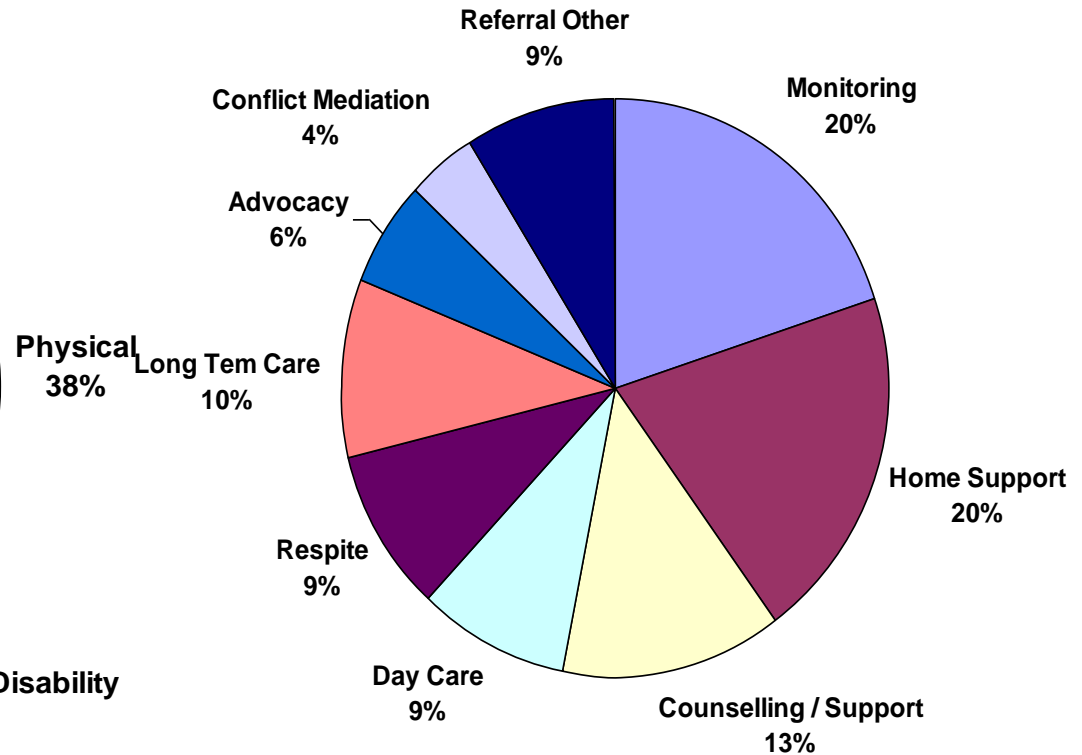
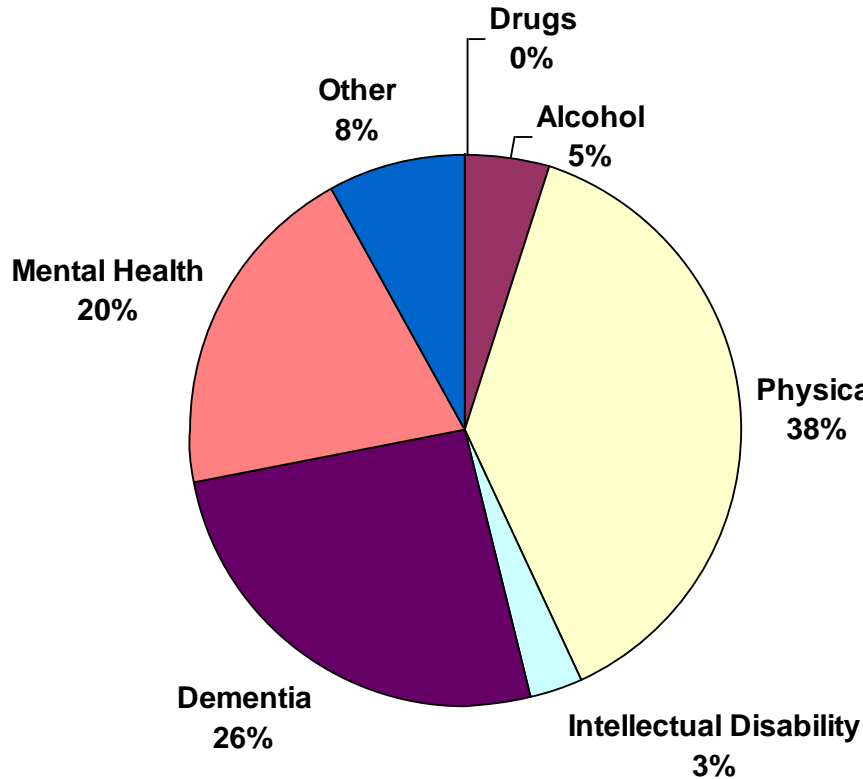
Substantiated Cases 2010

	2008 Data				2009 Data			
	Psych	Physical	Financial	Neglect	Psych	Physical	Financial	Neglect
No of Cases Substantiated*	161	106	73	82	195	106	76	59
Perpetrator								
Son/Daughter	49%	48%	47%	42%	50%	50%	38%	54%
Spouse	21%	23%	5%	11%	21%	28%	6%	22%
Other Relative	16%	18%	21%	12%	13%	8%	17%	14%
Carer			15%		2%		4%	5%
Neighbour					6%		12%	
Gender of Perpetrator**								
Male	57%	59%	51%	42%	60%	61%	68%	54%
Female	27%	35%	34%	44%	35%	38%	22%	29%
1 Male 1 Female		1%	7%	10%	1%	1%	1%	5%
Living with Client (Victim)								
Yes	65%	66%	51%	45%	61%	68%	34%	70%

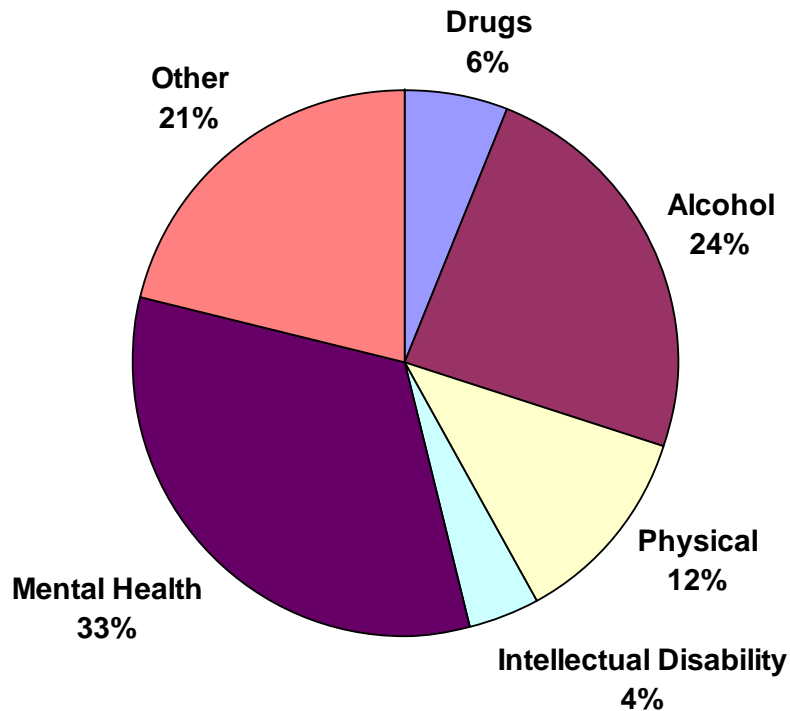
Case Length Cases with PCC



Issues & Interventions for Client



Issues & Interventions for the Person Causing Concern



- Support offered
- Referral to other services
 - Addiction
 - Mental Health

Key Findings Future Focus

- Findings are in agreement with the prevalence study conducted by NCPOP- strengthens our position in enabling international comparisons to be made.
- Referral rates indicate an under-reporting of elder abuse
- Financial abuse-significant abuse type experienced by older people
- Greater Garda involvement in cases
- The high level of provision and uptake of services by vulnerable individuals demonstrated a therapeutic added benefit of specialist elder abuse services.
- Higher levels of conclusive outcomes- evolving service
- The national database provides valuable insight into patterns of elder abuse and the nature of classification and response